

ALLDAY
& MILLER



Green Vale, London, W5 3AX
£450,000

2 1 1 C



Green Vale, London, W5 3AX

£450,000

- Two Double Bedrooms
- Allocated Garage
- Stunning views
- Great Location
- Well-Groomed Communal Gardens
- Balcony
- Chain Free
- Lift Access
- 956 Years Lease
- Close to multiple transports links (North Ealing and Ealing Broadway)

Description

Versatile and spacious this property brought to the market comprises of an entrance hall with storage cupboard, two double bedrooms, fitted kitchen, light filled reception/dining room with a private balcony, to complete is a family bathroom with separate WC.

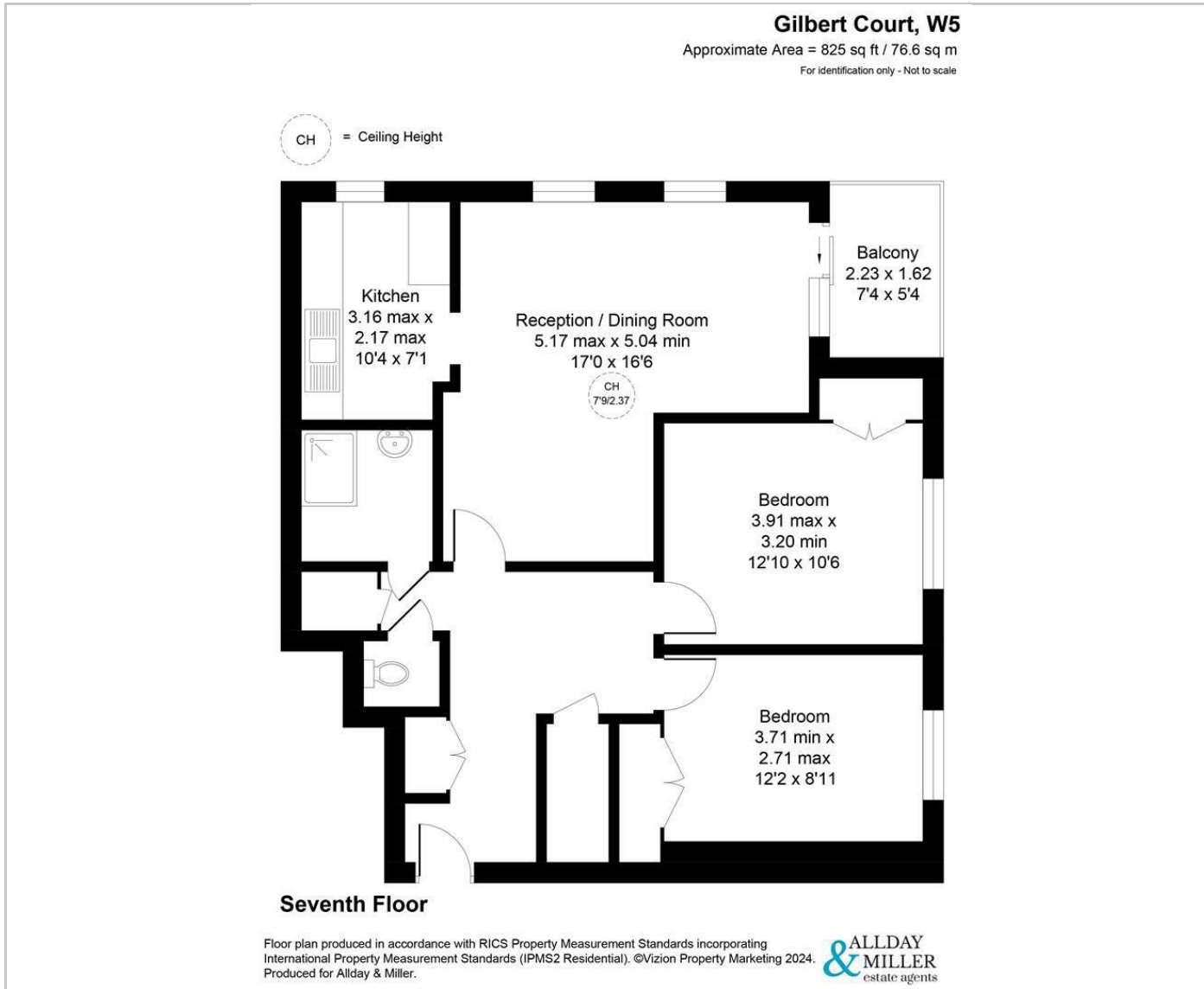
The development benefits from well maintained communal gardens, lift with access to all floors and a security phone entry system.

Situation

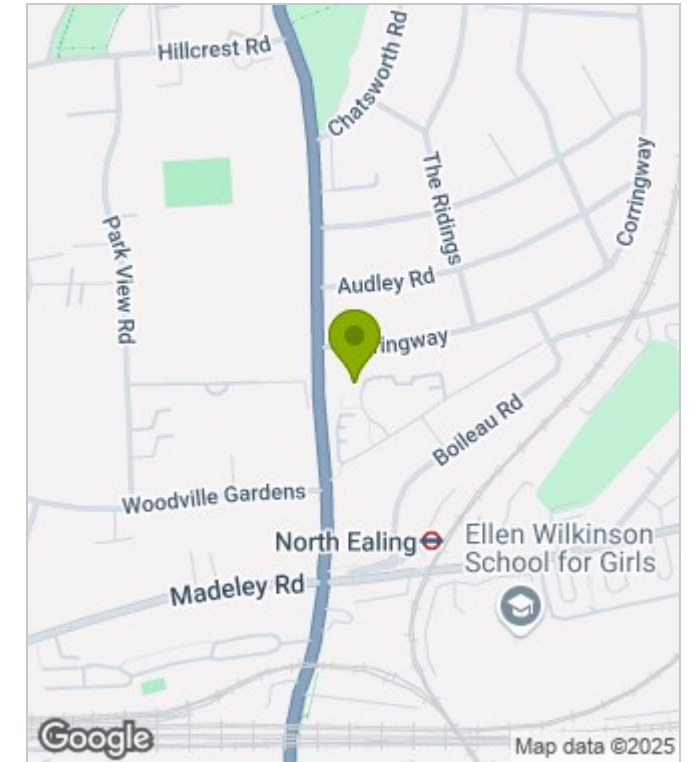
Gibert Court, Green Vale in the prime location situated close to a number of highly regarded schools including Holy Family Catholic Primary, West Acton Primary and Ellen Wilkinson High school. For the commuters North Ealing & West Acton stations are nearby, also road connections for the A4 and M4 / M40 motorways are just a short drive away. Ealing Broadway with its variety of local shops, restaurants, cafes and coffee shops is just a 6 minutes away.



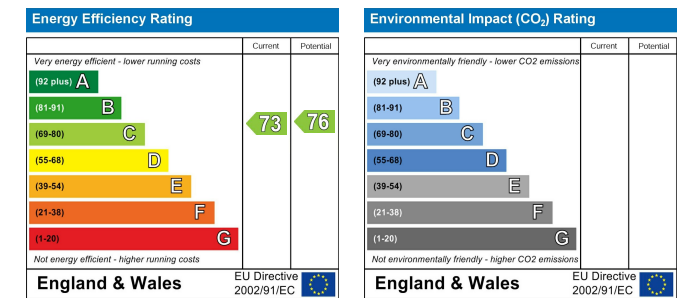
Floor Plans



Area Map



Energy Performance Graph



These particulars, whilst believed to be accurate are set out as a general outline only for guidance and do not constitute any part of an offer or contract. Intending purchasers should not rely on them as statements of representation of fact, but must satisfy themselves by inspection or otherwise as to their accuracy. No person in this firm's employment has the authority to make or give any representation or warranty in respect of the property.